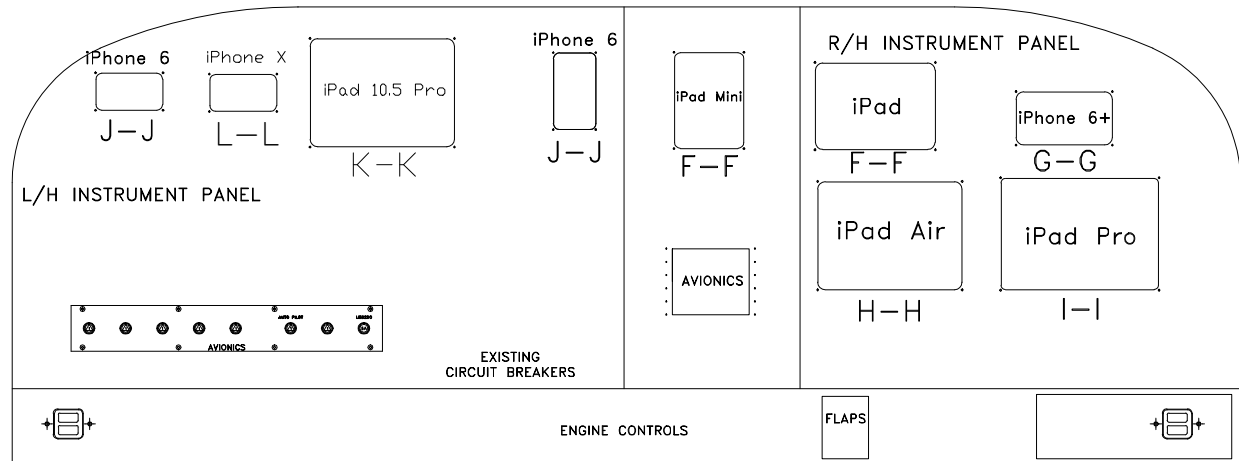


REVISIONS			
REV	DESCRIPTION	DATE	APVD
A	Initial release	06/2/2016	
B	add iPhone X 10.5	12/16/2017	

## NOTES:

- EXISTING EQUIPMENT.
- PERMISSIBLE TO TRIM PARTS CREATED BY THIS DRAWING ON INSTALLATION AS REQUIRED.
- TOUCH UP ALL BARE ALUMINUM SURFACES WITH ALODINE PER MIL-C-5541 CLASS 3.
- PARENTHETICAL ENTITIES, ( ), ARE FOR REFERENCE ONLY.
- LOCATE CIRCUIT BREAKER IN THE SAME GENERAL AREA WITH EXISTING CIRCUIT BREAKERS. LABEL AS SHOWN USING STANDARD ENGRAVING, SILKSCREEN, OR OTHER TECHNIQUES. LETTERING TO BE SAME HEIGHT AS EXISTING C/B LETTERING.
- — — — DENOTES EXISTING WIRES.
- ALL GROUNDS GO TO NEAREST GROUND POINT ON AIRCRAFT.
- TIE INTO EXISTING BUS BAR NEAR LOCATION OF NEW CIRCUIT BREAKER. IF A JUMPER WIRE IS REQUIRED, USE 20 GAUGE MIL-W-22759/XX TYPE.
- BEST COMMERCIAL EQUIVALENT MAY BE SUBSTITUTED FOR THIS PART.
- THE INSTALLATION OF WIRING TO BE PERFORMED IN ACCORDANCE WITH AC 43.13-1B, 2A, ACCEPTABLE METHODS, TECHNIQUES, AND PRACTICES - AIRCRAFT ALTERATIONS, CHAPTER 11. ALL WIRE TO BE MIL-W-22759/16 OR EQUIVALENT.



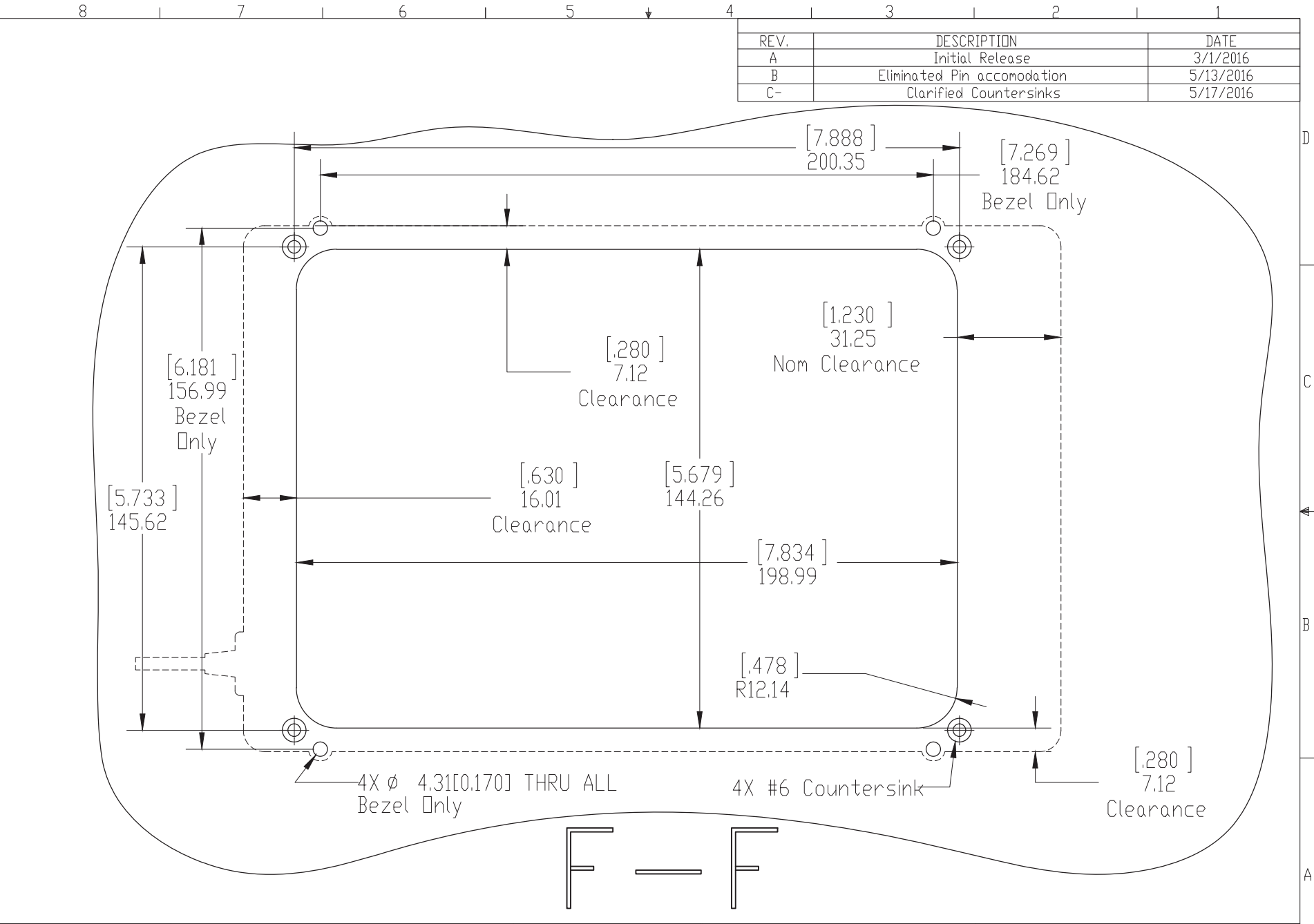
### INSTRUMENT PANEL

VIEW LOOKING FWD

FILENAME: 01-2510-01D01

① 1 USB-200-101		PART NUMBER		DESCRIPTION		VENDOR		
ITEM	QTY	DESIGN	DATE	UNLESS OTHERWISE NOTED ALL DIM ARE IN INCHES				
		DESIGN		TOLERANCES				
		DRAWN	Ahmed Hassan	06/2/2016	XXX ±.010 ANGLES .XX ±.03 ±1/2° .X ±.1			
		CHECK			TITLE			
		INSP.			Docks INSTALLATION			
		PROJ.			DRAWING NO.			
		REL.	ASH VIJ	06/2/2016	Docks121617846A			
		DASH			SCALE		SH 1   REV	
		NEXT ASSY			NONE		0 3 B	





REV.	DESCRIPTION	DATE
A	Initial Release	3/1/2016
B	Eliminated Pin accomodation	5/13/2016
C-	Clarified Countersinks	5/17/2016



©COPYRIGHT GUARDIAN AVIONICS  
 THE INFORMATION IN THIS DRAWING IS CONFIDENTIAL  
 AND IS THE INTELLECTUAL PROPERTY OF GUARDIAN  
 AVIONICS. REPRODUCTION IN WHOLE OR IN PART  
 WITHOUT WRITTEN PERMISSION OF GUARDIAN  
 AVIONICS IS PROHIBITED.

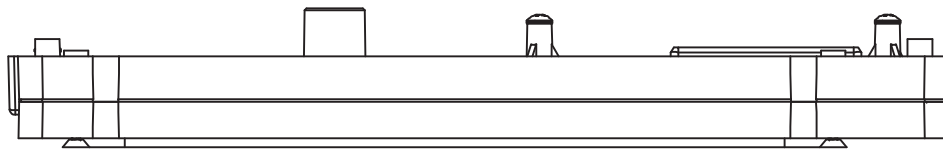
DO NOT SCALE DRAWING		
TOLERANCES UNLESS OTHERWISE SPECIFIED		
METRIC	IMPERIAL	ANGLES
X ± .10mm	.X ± .05"	±1°
.X ± .3mm	.XX ± .01"	
.XX ± .1mm	.XXX ± .005"	

PROJECT: iPad mini 1-6		DRAWING NAME: (Mini) Panel Reference	
SCALE: 1:1.5	DWG # Use Name	REVISION C-	PRINT DATE 5/17/2016

SHEET:  
**2 of 3**

8 7 6 5 4 3 2 1

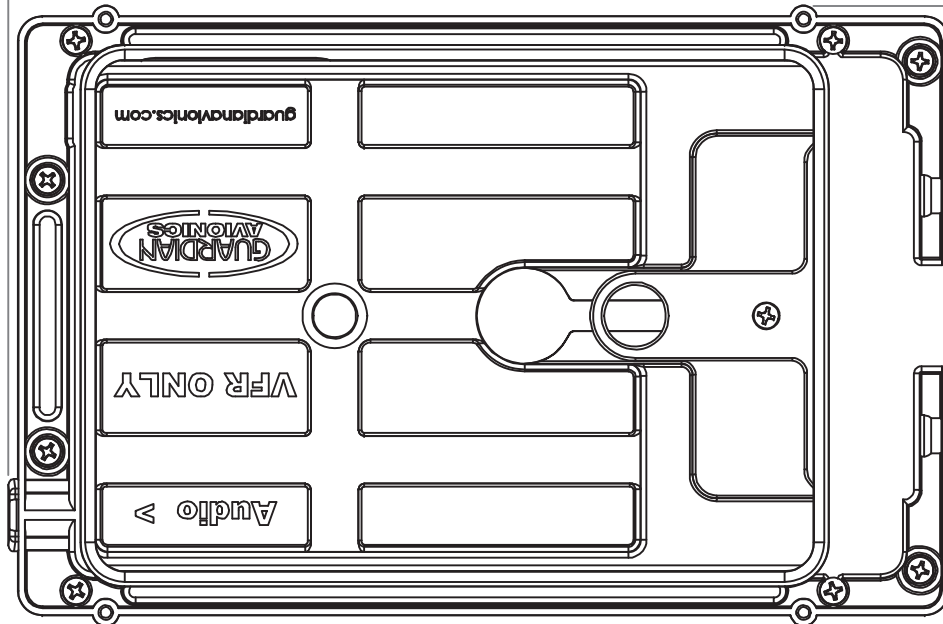
D



D

[248.74]  
9.79

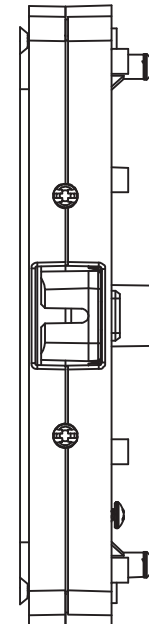
C



C

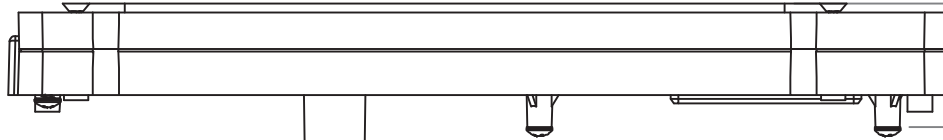
[164.08]  
6.46

B



B

A



A

[32.59]  
1.28



© COPYRIGHT GUARDIAN AVIONICS  
THE INFORMATION IN THIS DRAWING IS CONFIDENTIAL  
AND IS THE INTELLECTUAL PROPERTY OF GUARDIAN  
AVIONICS. REPRODUCTION IN WHOLE OR IN PART  
WITHOUT WRITTEN PERMISSION OF GUARDIAN  
AVIONICS IS PROHIBITED.

**DO NOT SCALE DRAWING**  
TOLERANCES UNLESS  
OTHERWISE SPECIFIED:  
METRIC IMPERIAL ANGLES  
X±1.00mm .X ±.05"  
X±.3mm .XX ±.01"  
.XX±.1mm .XXX±.005" ±1°

PROJECT:  
**iPad mini 1-6**  
SCALE: 1:2  
DWG # IPM-100

DRAWING NAME <b>(Mini) DOCK ASSY</b>		REVISION <b>J</b>	PRINT DATE <b>9/16/2016</b>	SHEET <b>3 of 3</b>
-----------------------------------------	--	----------------------	--------------------------------	------------------------

8 7 6 5 4 3 2 1