

iFDR 650 / iFDR 680 Connected Cockpit

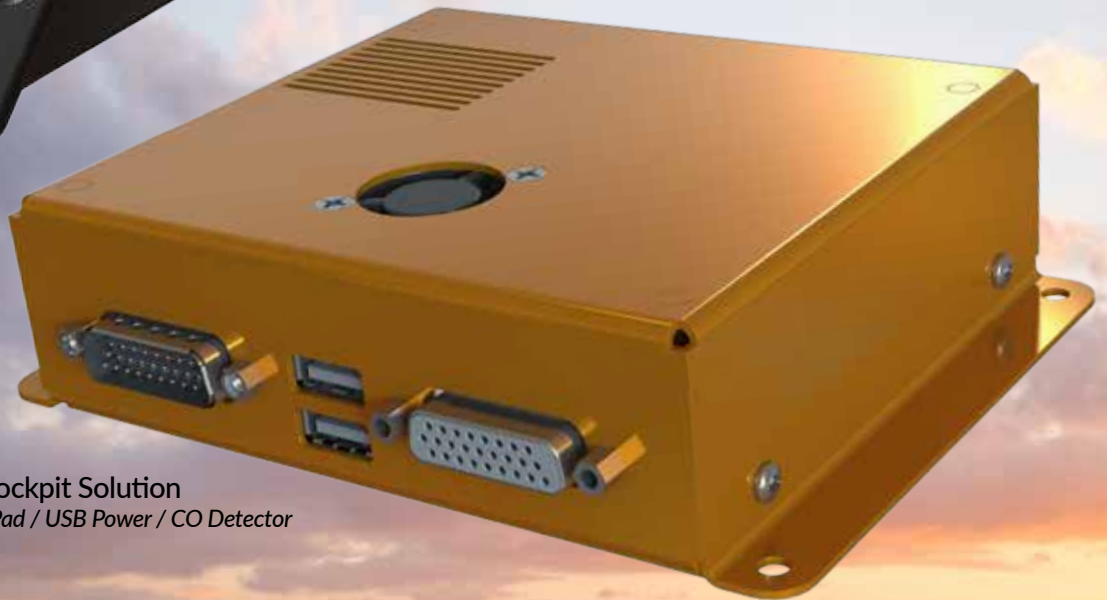
Flight Data & Voice Recorder / MFD on iPad / USB Power / CO Detector



iFDR 650

Panel Mounted Connected Cockpit Solution

Flight Data & Voice Recorder / MFD on iPad / USB Power / CO Detector



iFDR 680

Remote Mounted Connected Cockpit Solution

Flight Data & Voice Recorder / MFD on iPad / USB Power / CO Detector

ADD POWERFUL FUNCTIONALITY TO YOUR PANEL.

The **iFDR 650 and iFDR 680 Connected Cockpit** are extremely unique and powerful tools that add a variety of powerful functionality to your aircraft while providing the reliable and proven CO detection technology that Guardian Avionics is known for.

Simply connect your existing GPS and Engine Data monitors to the iFDR 650 / 680 and stream and display the data on our iFDR Pilot App through USB or Bluetooth right on your iPad and iPhone. Record all that data along with your inflight audio and upload it to the cloud for your after flight review or to use for trend analysis over the long term!

Both units have USB power and data delivery ability, allowing you to easily charge your iPad or iPhone at 2.1 amps while connected to the iFDR 650 / 680.

Currently available for experimental / homebuilt aircraft.



iPad Mini with iFDR Pilot Pro App Displaying Engine Data



Guardian Avionics
1951 East Airport Drive
Tucson, Arizona 85756 USA

520.889.1177 main
sales@guardianavionics.com
www.GuardianAvionics.com

iFDR 650 / 680 Connected Cockpit

Flight Data & Voice Recorder / MFD on iPad / USB Power / CO Detector

Designed and Manufactured by Guardian Avionics

Start with the CO Detection that Guardian Avionics is Known For.

The iFDR 650 and iFDR 680 are built around the reliable and accurate Carbon Monoxide detection technology that Guardian Avionics and CO Guardian has been known for. The sensitive onboard CO sensor alarms an initial warning when CO levels measure greater than 50 parts-per-million (PPM) up to 99 PPM. A persistent warning will trigger when levels climb above 99 PPM immediately when detected.

Your GPS and Engine Monitor Connect & Display on Your iPad & iPhone.

The iFDR 650 and iFDR 680 can be connected to your onboard GPS and Engine Monitor, allowing accurate navigation and engine performance data to be aggregated, transmitted, displayed, and recorded on your iPad and/or iPhone through the Guardian Avionics iFDR Pilot App. As a result, your iPad and iPhone become mini-multifunction displays -- fully equipped with accurate VFR and IFR maps and charts, rich graphical engine performance information, and even a mini-PFD/MFD for quick reference. The iFDR 680 even has an onboard AHRS, further supporting the accuracy of the navigational data. All Carbon Monoxide alerts and levels are also available on the iFDR Pilot App too! Both the iFDR 650 and iFDR 680 have dual USB-A ports built in with 2.1 amp charging available at all times. And co-pilots and passengers can additionally connect to the iFDR 650 or 680 data via built-in Bluetooth!

All Your Flight Data is Sent and Stored in the Cloud for You.

Through the iFDR Pilot App, all of your flight data is stored and uploaded to your account on GuardianAvionicsData.com via 3G/4G/LTE or WiFi at the end of every flight, with the ability to download and view flight tracks on programs like Google Earth, view engine data through rich charts and graphs, and even export your data for use through other programs or to send to others. If your iPad or iPhone is connected to your audio panel through a 3.5 mm audio jack, the app will even record the audio from your intercom and upload it to your account for each flight too!

How can you use the data? See how accurate your recent practice approaches were on a recent flight. Send trend data to your A&P or engine manufacturer to troubleshoot an issue. Evaluate all aspects of a recent training flight, including radio procedures.

Budget and Panel Space Friendly.

Equipping iFDR 650 or iFDR 680 is like bundling multiple pieces of equipment into one compact unit. In the past you'd need to buy and install a CO detector, USB power supply, and GPS signal booster for your iPad/iPhone as separate items - and flight data recording on an app for both navigation and engine data was not even available! Now you can get all of that in one small, easy to install package for one reasonable price!



PFD Screen of iFDR Pilot App.



Engine Data Screen of iFDR Pilot App.



VFR & IFR Charts in iFDR Pilot App.

Part Number	Description	Input Power	Dimensions
IFDR650	iFDR 650 Panel Mount Connected Cockpit	14/28 VDC	7" L x 1.3" H x 1.8" W / 8 oz
IFDR680	iFDR 680 Remote Mount Connected Cockpit w/ AHRS	14/28 VDC	5.75" L x 1.3" H x 4.25" W / 9 oz

The iFDR 650 and iFDR 680 supports data input via RS-232 from the following systems:

GPS/Navigation: Garmin GNS 430/480/530, GTN 625/635/650/725/750, G3X/G3X Touch; Avidyne IFD 440/540.

Engine Data: Garmin G3X/G3X Touch; J.P. Instruments (JPI) EDM 730, EDM 830, EDM 900 Primary & Experimental. *Expected Software Update in 2017 3Q to additionally include:* Grand Rapids Technologies (GRT) EIS 2000, EIS 4000/6000; Advanced Flight Systems ACS 2002/AF-2500

Installation Details and Purchasing Info at: GUAV.CO/IFDR650-680