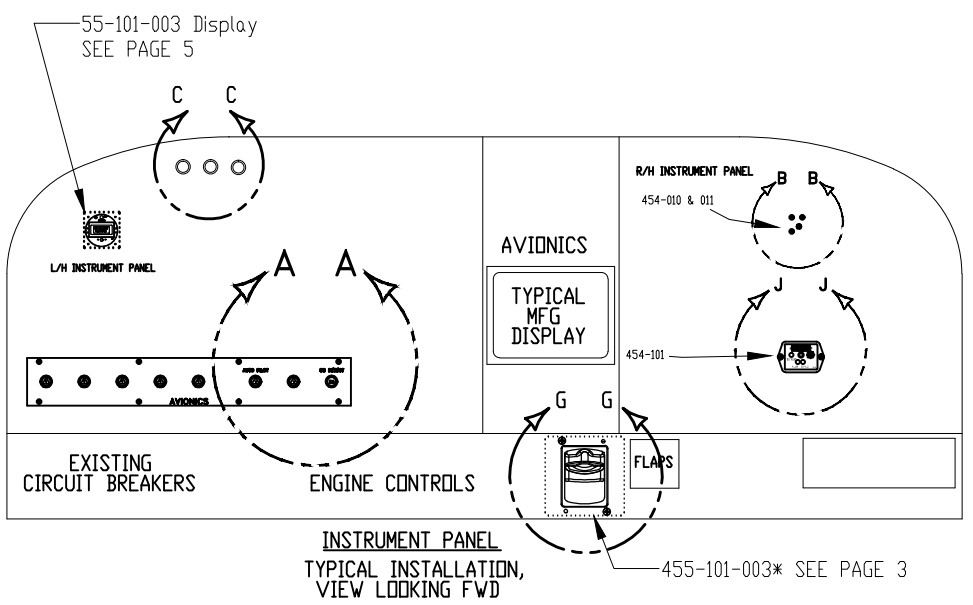


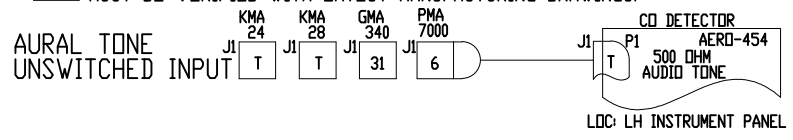
REV.	DESCRIPTION	DATE
A	Initial Release	05/06/2011
B	ADDED FLANGNOTES 21 AND PAGE 6	03/01/2012
C	ADDED FLANGNOTES 22 AND 23	06/01/2012
E	DRAWING REGENERATED	05/15/2014

NOTES:

- 1 EXISTING EQUIPMENT.
- 2 PERMISSIBLE TO TRIM PARTS CREATED BY THIS DRAWING ON INSTALLATION AS REQUIRED.
- 3 TOUCH UP ALL BARE ALUMINUM SURFACES WITH ALDINE PER MIL-C-5541 CLASS 3.
- 4 PARENTHETICAL ENTITIES, (>), ARE FOR REFERENCE ONLY.
- 5 LOCATE CIRCUIT BREAKER IN THE SAME GENERAL AREA WITH EXISTING CIRCUIT BREAKERS. LABEL AS SHOWN USING STANDARD ENGRAVING, SILKSCREEN, OR OTHER TECHNIQUES. LETTERING TO BE SAME HEIGHT AS EXISTING C/B LETTERING.
- 6 -----DENOTES EXISTING EQUIPMENT.
- 7 GROUND TWISTED-PAIR POWER RETURN WIRE NEAR CIRCUIT BREAKER PANEL. TWISTED-PAIR TO BE 6 TURNS PER FOOT OR GREATER.
- 8 TIE INTO EXISTING BUS BAR NEAR LOCATION OF NEW CIRCUIT BREAKER. IF A JUMPER WIRE IS REQUIRED, USE 20 GAUGE MIL-W-22759/XX TYPE.
- 9 BEST COMMERCIAL EQUIVALENT MAY BE SUBSTITUTED FOR THIS PART.
- 10 THE INSTALLATION OF WIRING TO BE PERFORMED IN ACCORDANCE WITH AC 43.13-1B, 2A, ACCEPTABLE METHODS, TECHNIQUES, AND PRACTICES - AIRCRAFT ALTERATIONS, CHAPTER 11. ALL WIRE TO BE MIL-W-22759/16 OR EQUIVALENT.
- 11 LETTERING TO BE .10 HIGH MINIMUM, WHITE, HELVETICA, LOCATED APPROX AS SHOWN. USE STANDARD SILKSCREENING, ENGRAVING OR PLACARD TECHNIQUES.
- 12 OPTIONAL MOUNTING SCREW/ MOUNTING HOLE
- 13 SEE OWNERS MANUAL 454-201 FOR INSTALLATION CRITERIA.
- 14 SEE MFG INSTALLATION MANUAL FOR RS-232 HOOKUPS (OPTIONAL).
- 15 SPARE GROUND USED BY SOME DISPLAY MFG'S EXAMPLE GARMIN 900 AND G1000. SEE GARMIN INSTALLATION MANUAL.
- 16 MFD CONTROLLED BY RS232 REMOTE TEST/RESET EXAMPLE GARMIN 900 & 1000
- 17 UNITE CAN BE INSTALLED BEHIND INSTRUMENT PANEL OR OTHER AREAS WHERE A 1/2 SAMPLING AND MONITORING IS SUFFICIENT OR REQUIRED
- 18 LIGHT LOCATION IN THE AREA OF PILOTS VIEW. CAN BE INTEGRATED TO MASTER CAUTION PANEL LIGHTS
- 19 OPTIONAL LIGHTS
- 20 455-101-003 PULSE OXIMETER
- 21 G1000 FAMILY- CONNECT EXTERNAL GROUND WIRE AS SOFTWARE RESET IS LOST FROM THE GIA63 DURING SETUP.
- 23 SEE DOCUMENT 454-203 FOR DIFFERENT MANUFACTURER PINOUT CONFIGURATION



22 THE FOLLOWING IS A GUIDE FOR UNSWITCHED AUDIO PINOUTS. PINOUTS MUST BE VERIFIED WITH LATEST MANUFACTURING DRAWINGS.



ITEM	QTY	PART NUMBER	DESCRIPTION	VENDOR
6	3	205204-1	9 PIN D-SUB	AMP
6	3	MS35214-44	SCREW	QPL
4			NOT USED	
3	1	85551-A-3-DDS	LAMP	SOLAN
3	1	7277-2-2	CIRCUIT BREAKER	KLIXON
1	1	454-***	CD DETECTOR	CD GUARDIAN
			DESCRIPTION	VENDOR



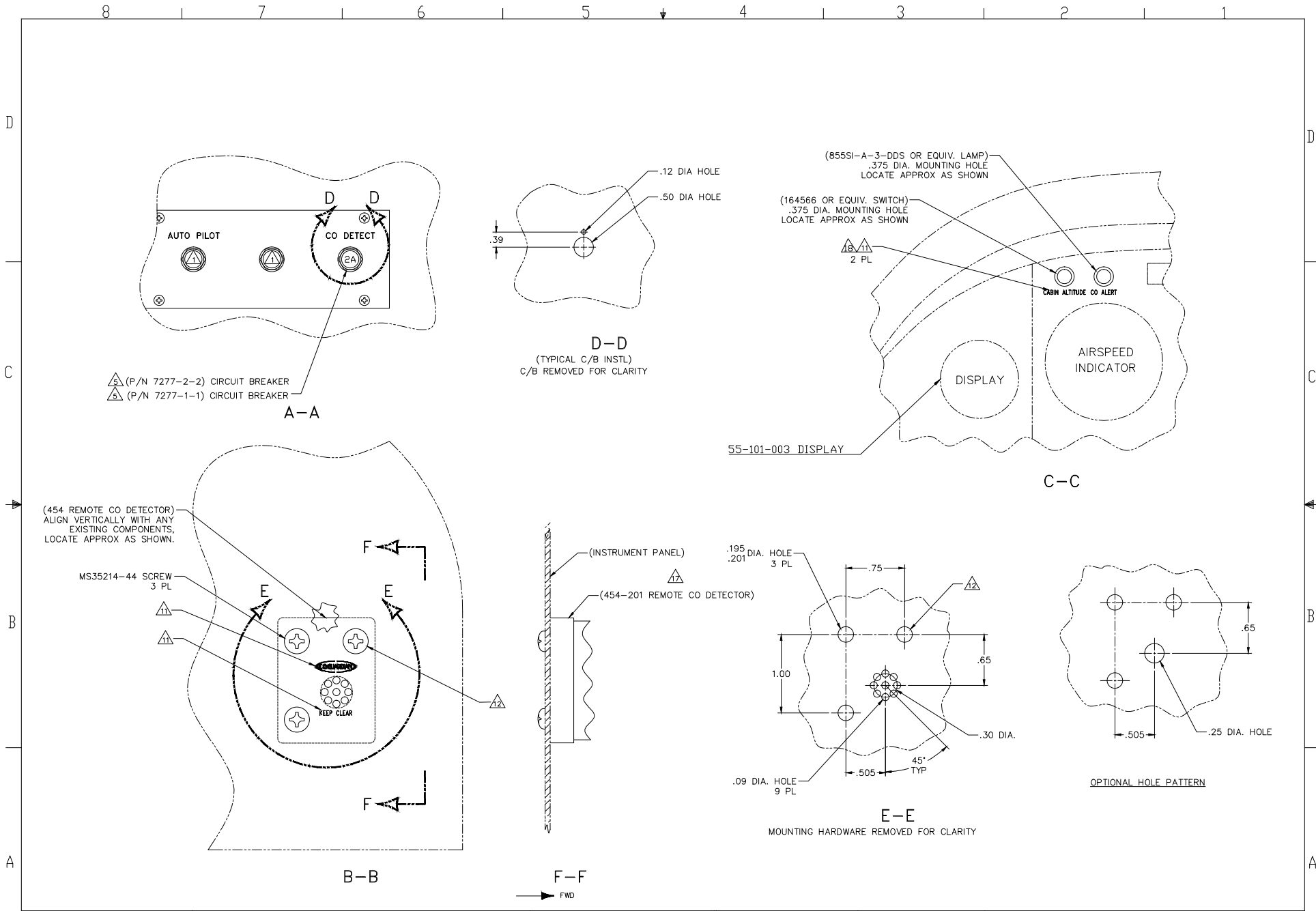
©COPYRIGHT CD GUARDIAN LLC
 THE INFORMATION IN THIS DRAWING IS CONFIDENTIAL AND IS THE INTELLECTUAL PROPERTY OF CD GUARDIAN LLC. REPRODUCTION IN WHOLE OR IN PART WITHOUT WRITTEN PERMISSION OF CD GUARDIAN LLC IS PROHIBITED.

DO NOT SCALE DRAWING
 TOLERANCES UNLESS OTHERWISE SPECIFIED:
 METRIC: X ± 1.00mm, .X ± .3mm, .XX ± .1mm
 IMPERIAL: .X ± .05", .XX ± .01", .XXX ± .005"
 ANGLES: ± 1°

DESIGNED: A. HASSAN
 SCALE: N/A
 DWG #: 454-202

APPROVED: A. VIJ [05-15-14]

DRAWING NAME: SP02-CD Sensor Installation
 REVISION: E
 NEXT ASSY:
 SHEET: 1 of 6



CO GUARDIAN
 1951 EAST AIRPORT DR.
 TUCSON, AZ 85756-6902

©COPYRIGHT CO GUARDIAN LLC
 THE INFORMATION IN THIS DRAWING IS CONFIDENTIAL
 AND IS THE INTELLECTUAL PROPERTY OF CO
 GUARDIAN LLC. REPRODUCTION IN WHOLE OR IN
 PART WITHOUT WRITTEN PERMISSION OF CO
 GUARDIAN LLC IS PROHIBITED.

DO NOT SCALE DRAWING		
TOLERANCES UNLESS OTHERWISE SPECIFIED:		
METRIC	IMPERIAL	ANGLES
X ± 1.00mm	.XX ± .05"	± 1°
.X ± .3mm	.XX ± .01"	
.XX ± .1mm	.XXX ± .005"	

DESIGNED:
A. HASSAN

SCALE:
N/A

APPROVED:
A. VIJ [05-15-14]

DWG #
454-202

DRAWING NAME:
SP02-CD Sensor Installation

REVISION
E

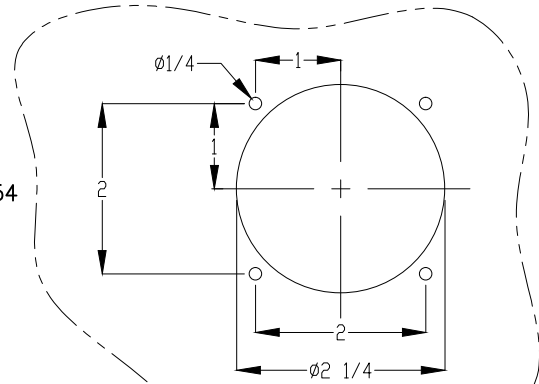
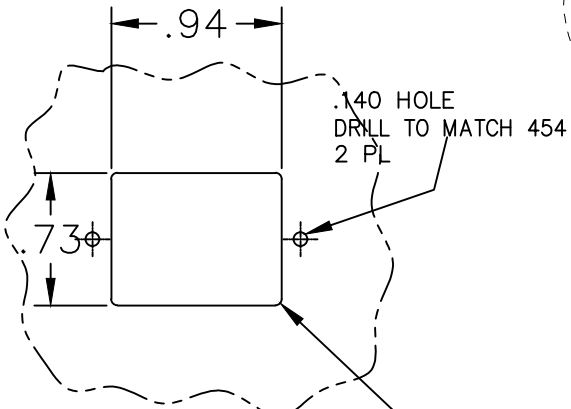
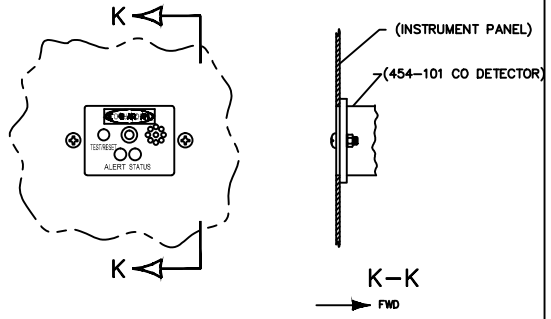
NEXT ASSY

SHEET:
2 of 6

8 7 6 5 4 3 2 1

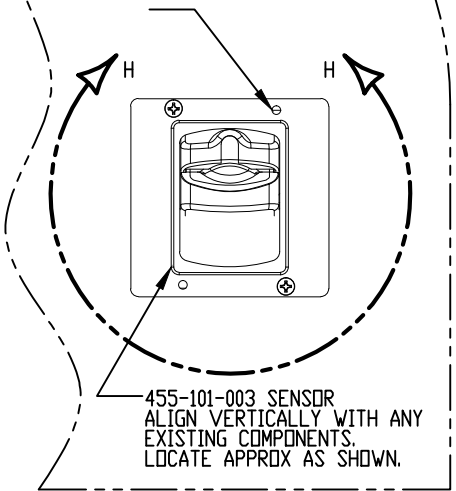
NOTE:

OPTIONAL FLUSH MOUNT INSTALLATION: MOUNT 454-101 CO DETECTOR BEHIND MOUNTING HOLE IN INSTRUMENT PANEL.



Optional 2.25" Round Hole Mount
455-101-003 AND FOR 55-101-003

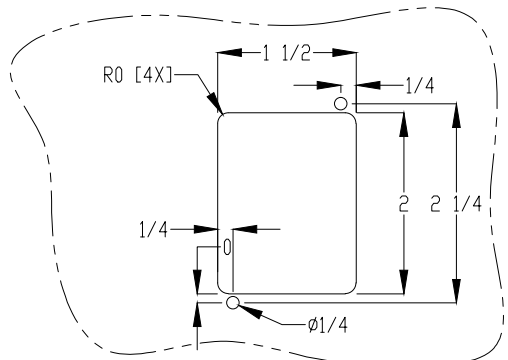
MOUNTING SCREWS
McMaster 91772A148
2 PL [455-101-1 SENSOR]
4 PL [455-101-1R SENSOR]



455-101-003 SENSOR
ALIGN VERTICALLY WITH ANY
EXISTING COMPONENTS.
LOCATE APPROX AS SHOWN.

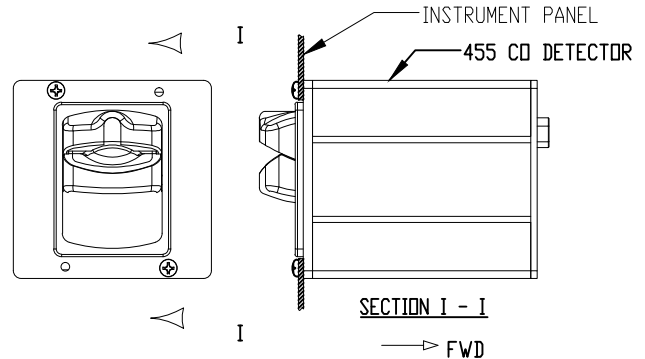
SECTION G - G

SECTION J-J
454-101 REMOVED FOR CLARITY



455-101-003
SECTION H - H
455-101-003 REMOVED FOR CLARITY

FLUSH MOUNT INSTALLATION: MOUNT 455 CO DETECTOR BEHIND MOUNTING HOLE IN INSTRUMENT PANEL AS SHOWN



SECTION I - I



1951 EAST AIRPORT DR.
TUCSON, AZ 85756-6902

©COPYRIGHT CO GUARDIAN LLC
THE INFORMATION IN THIS DRAWING IS CONFIDENTIAL
AND IS THE INTELLECTUAL PROPERTY OF CO
GUARDIAN LLC. REPRODUCTION IN WHOLE OR IN
PART WITHOUT WRITTEN PERMISSION OF CO
GUARDIAN LLC IS PROHIBITED.

DO NOT SCALE DRAWING TOLERANCES UNLESS OTHERWISE SPECIFIED:		
METRIC	IMPERIAL	ANGLES
X ± 1.00mm	.X ± .05"	± 1°
.X ± .3mm	.XX ± .01"	
.XX ± .1mm	.XXX ± .005"	

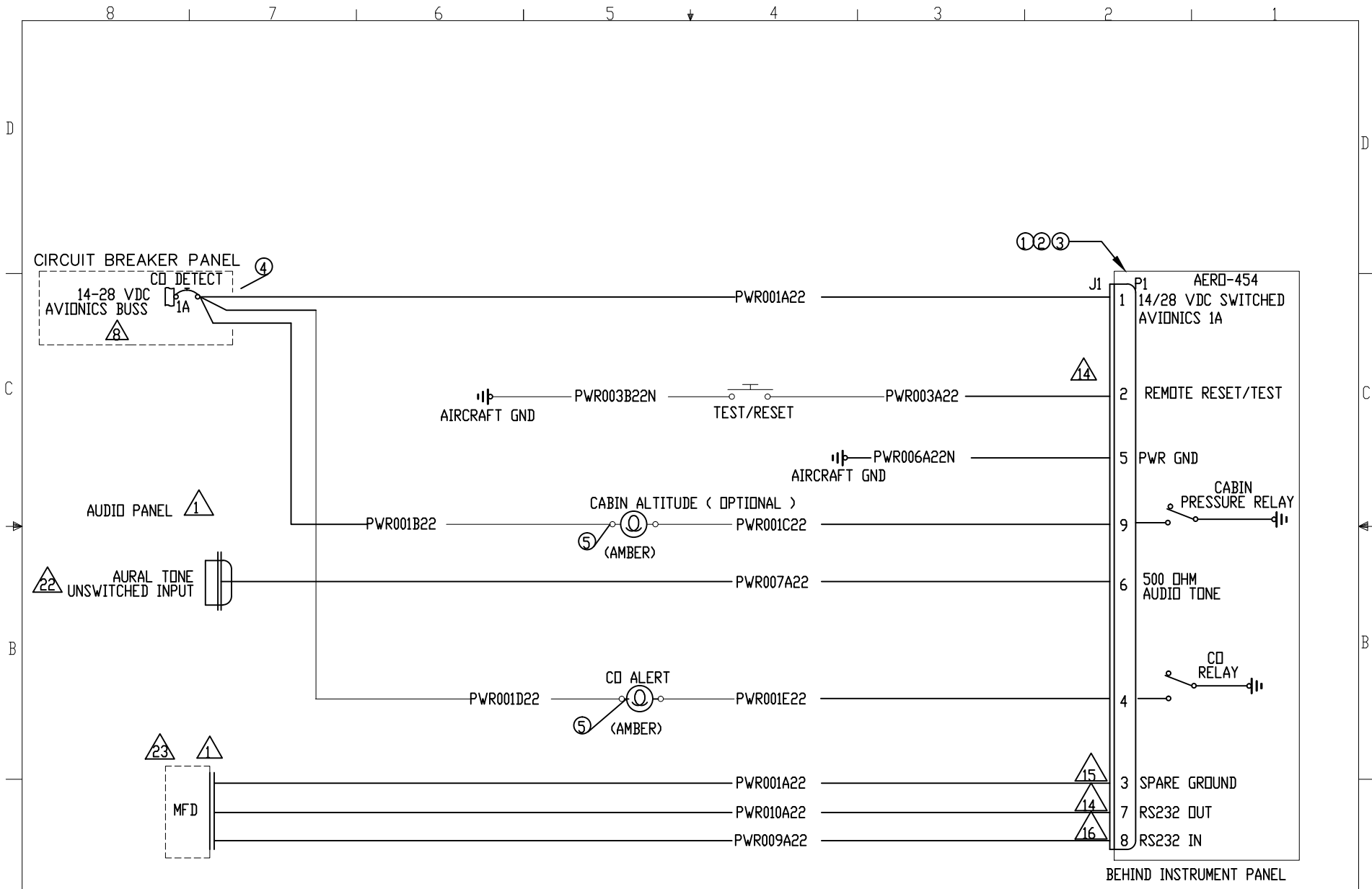
DESIGNER: A. HASSAN	APPROVED: A. VIJ [05-15-14]
SCALE: N/A	DWG # 454-202

DRAWING NAME: SP02-CO Sensor Installation
REVISION E

NEXT ASSY

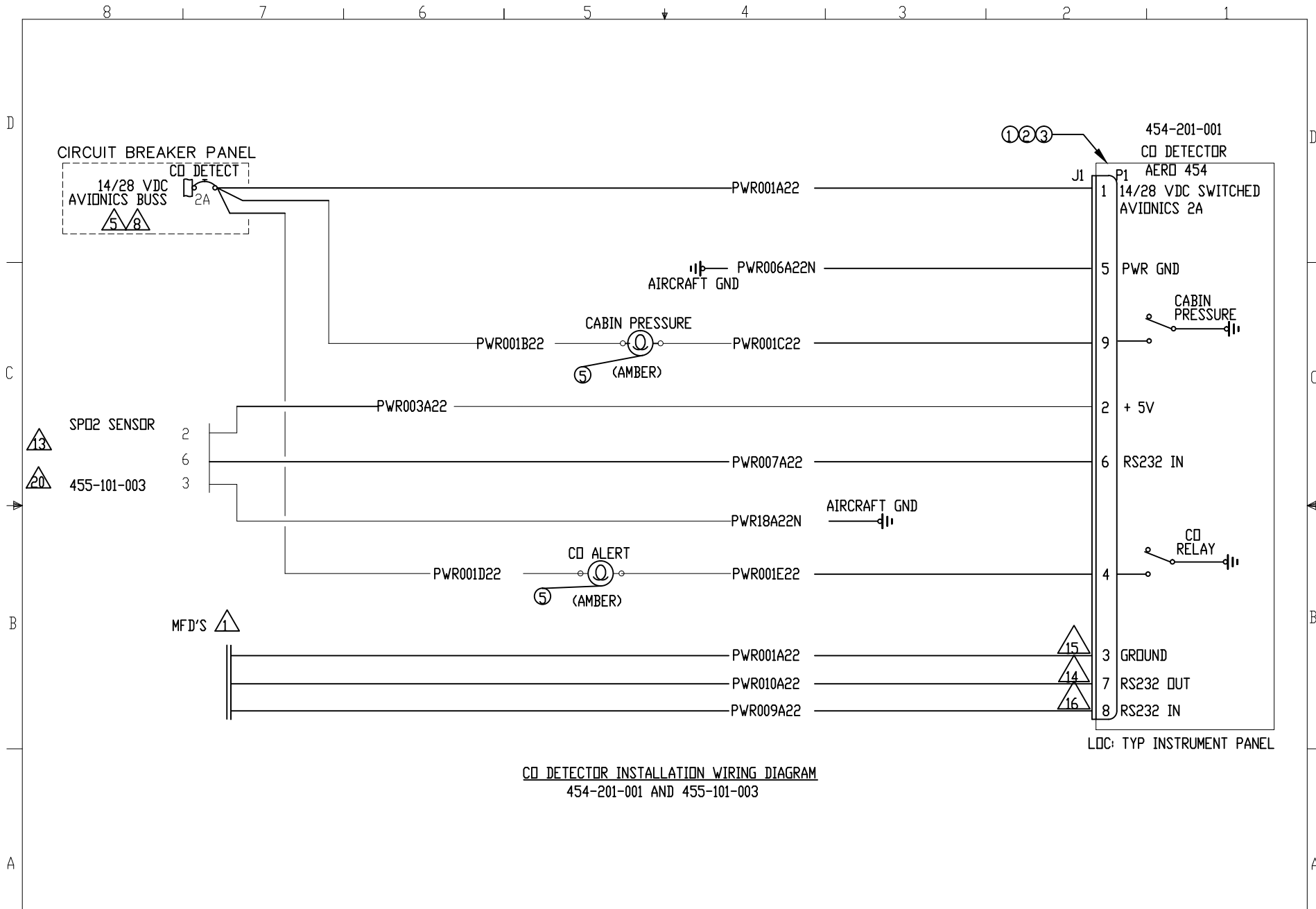
SHEET: 3 of 6

8 7 6 5 4 3 2 1



CO DETECTOR INSTALLATION WIRING DIAGRAM
454-201-010,011 AND -101

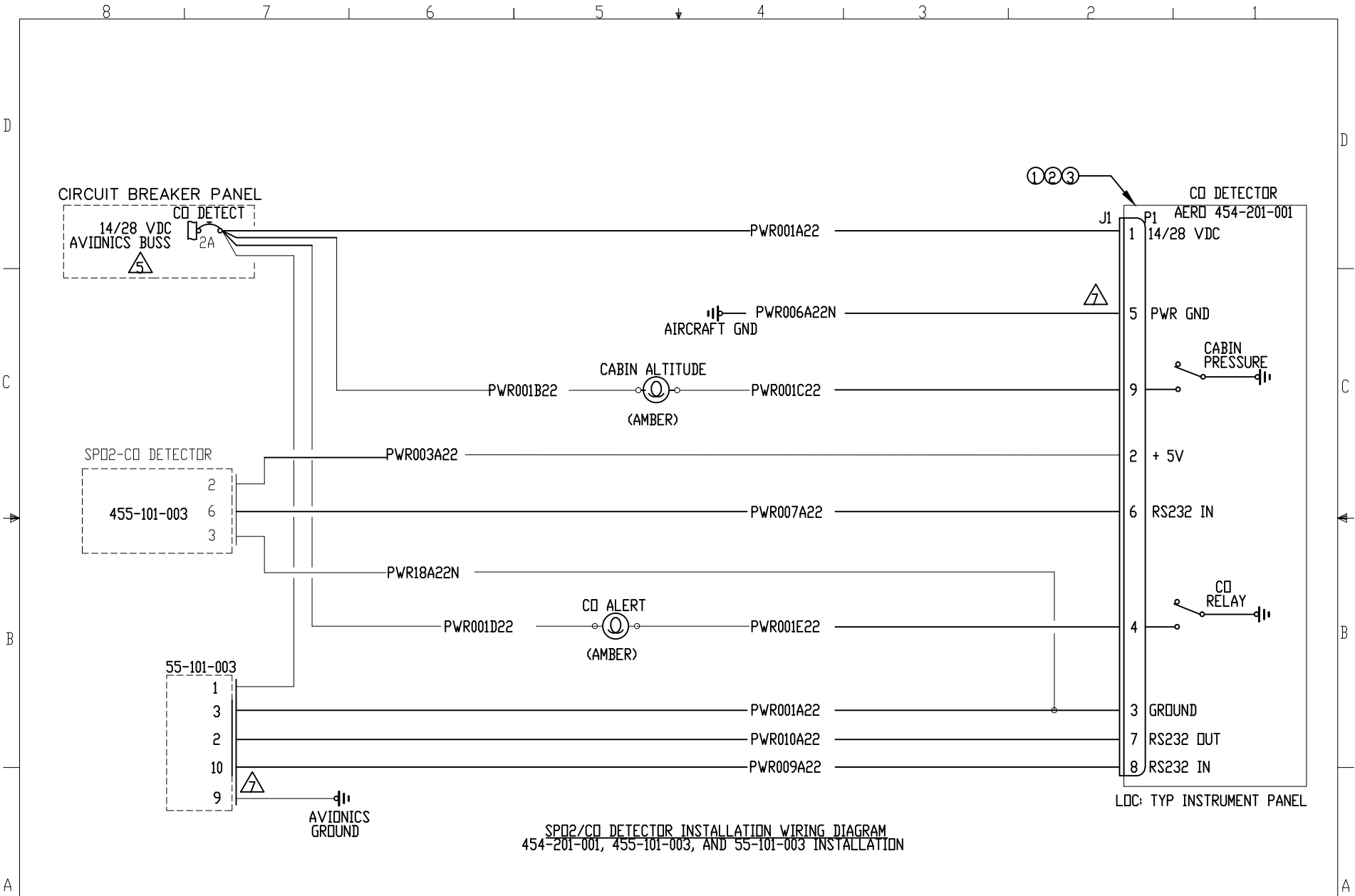
 1951 EAST AIRPORT DR. TUCSON, AZ 85756-6902	©COPYRIGHT CO GUARDIAN LLC THE INFORMATION IN THIS DRAWING IS CONFIDENTIAL AND IS THE INTELLECTUAL PROPERTY OF CO GUARDIAN LLC. REPRODUCTION IN WHOLE OR IN PART WITHOUT WRITTEN PERMISSION OF CO GUARDIAN LLC IS PROHIBITED.	DO NOT SCALE DRAWING TOLERANCES UNLESS OTHERWISE SPECIFIED: METRIC IMPERIAL ANGLES X ± 1.00mm .X ± .05" ± 1° .X ± .3mm .XX ± .01" .XX ± .1mm .XXX ± .005"	DESIGNED: A. HASSAN	APPROVED: A. VIJ [05-15-14]	DRAWING NAME: SP02-CO Sensor Installation
			SCALE: N/A	DWG # 454-202	REVISION E



CD DETECTOR INSTALLATION WIRING DIAGRAM
454-201-001 AND 455-101-003

LOC: TYP INSTRUMENT PANEL

 1951 EAST AIRPORT DR. TUCSON, AZ 85756-6902	©COPYRIGHT CO GUARDIAN LLC THE INFORMATION IN THIS DRAWING IS CONFIDENTIAL AND IS THE INTELLECTUAL PROPERTY OF CO GUARDIAN LLC. REPRODUCTION IN WHOLE OR IN PART WITHOUT WRITTEN PERMISSION OF CO GUARDIAN LLC IS PROHIBITED.	DO NOT SCALE DRAWING TOLERANCES UNLESS OTHERWISE SPECIFIED:		DESIGNED: A. HASSAN	APPROVED: A. VIJ [05-15-14]	DRAWING NAME: SP02-CD Sensor Installation		
		METRIC: X ± 1.00mm X ± .3mm .XX ± .1mm	IMPERIAL: X ± .05" .XX ± .01" .XXX ± .005"	ANGLES: ± 1°	SCALE: N/A	DWG # 454-202	REVISION E	NEXT ASSY



SP02/CO DETECTOR INSTALLATION WIRING DIAGRAM
 454-201-001, 455-101-003, AND 55-101-003 INSTALLATION



©COPYRIGHT CO GUARDIAN LLC
 THE INFORMATION IN THIS DRAWING IS CONFIDENTIAL
 AND IS THE INTELLECTUAL PROPERTY OF CO
 GUARDIAN LLC. REPRODUCTION IN WHOLE OR IN
 PART WITHOUT WRITTEN PERMISSION OF CO
 GUARDIAN LLC IS PROHIBITED.

DO NOT SCALE DRAWING TOLERANCES UNLESS OTHERWISE SPECIFIED:		
METRIC	IMPERIAL	ANGLES
X ± 1.00mm	.X ± .05"	± 1°
.X ± .3mm	.XX ± .01"	
.XX ± .1mm	.XXX ± .005"	

DESIGNED: A. HASSAN	APPROVED: A. VIJ [05-15-14]
SCALE: N/A	DWG # 454-202

DRAWING NAME: SP02-CO Sensor Installation	
REVISION E	NEXT ASSY
SHEET: 6 of 6	