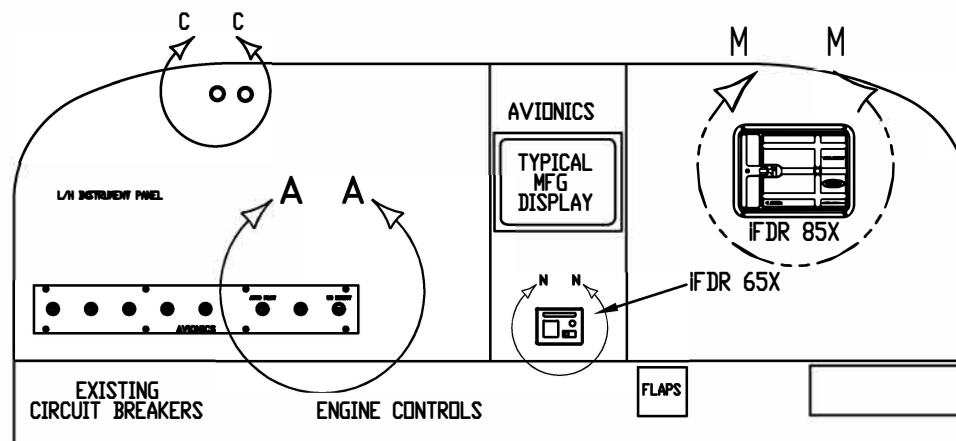
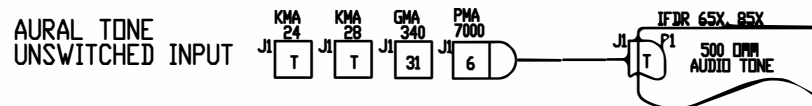


8 7 6 5 4 3 2 1

REV.	DESCRIPTION	DATE
A	Initial Release	10/13/2018

GENERAL NOTES:

- 1 EXISTING EQUIPMENT.
- 2 PERMISSIBLE TO TRIM PARTS CREATED BY THIS DRAWING ON INSTALLATION AS REQUIRED.
- 3 TOUCH UP ALL BARE ALUMINUM SURFACES WITH ALDINE PER MIL-C-5541 CLASS 3.
- 4 PARENTHETICAL ENTITIES, (), ARE FOR REFERENCE ONLY.
- 5 LOCATE CIRCUIT BREAKER IN THE SAME GENERAL AREA WITH EXISTING CIRCUIT BREAKERS. LABEL AS SHOWN USING STANDARD ENGRAVING, SILKSCREEN, OR OTHER TECHNIQUES. LETTERING TO BE SAME HEIGHT AS EXISTING C/B LETTERING.
- 6 -----DENOTES EXISTING EQUIPMENT.
- 7 GROUND TWISTED-PAIR POWER RETURN WIRE NEAR CIRCUIT BREAKER PANEL. TWISTED-PAIR TO BE 6 TURNS PER FOOT OR GREATER.
- 8 TIE INTO EXISTING BUS BAR NEAR LOCATION OF NEW CIRCUIT BREAKER. IF A JUMPER WIRE IS REQUIRED, USE 20 GAUGE MIL-W-22759/XX TYPE.
- 9 BEST COMMERCIAL EQUIVALENT MAY BE SUBSTITUTED FOR THIS PART.
- 10 THE INSTALLATION OF WIRING TO BE PERFORMED IN ACCORDANCE WITH AC 43.13-1B, 2A, ACCEPTABLE METHODS, TECHNIQUES, AND PRACTICES - AIRCRAFT ALTERATIONS, CHAPTER 11. ALL WIRE TO BE MIL-W-22759/16 OR EQUIVALENT.
- 11 LETTERING TO BE .10 HIGH MINIMUM, WHITE, HELVETICA, LOCATED APPROX AS SHOWN. USE STANDARD SILKSCREENING, ENGRAVING OR PLACARD TECHNIQUES.
- 12 OPTIONAL MOUNTING SCREW/ MOUNTING HOLE
- 13 SEE OWNERS MANUAL IFDR 10-3 FOR INSTALLATION CRITERIA.
- 14 SEE MFG INSTALLATION MANUAL FOR RS-232 HOOKUPS (OPTIONAL).
- 15 SPARE GROUND USED BY SOME DISPLAY MFG'S EXAMPLE GARMIN G3X SEE INSTALLATION MANUAL.
- 16 MFD CONTROLLED BY RS232 REMOTE TEST/RESET EXAMPLE G3X
- 17 LIGHT LOCATION IN THE AREA OF PILOTS VIEW. CAN BE INTEGRATED TO MASTER CAUTION PANEL LIGHTS
- 18 THE FOLLOWING IS A GUIDE FOR UNSWITCHED AUDIO PINOUTS. PINOUTS MUST BE VERIFIED WITH LATEST MANUFACTURING DRAWINGS.



INSTRUMENT PANEL
TYPICAL INSTALLATION,
VIEW LOOKING FWD

ITEM	QTY	PART NUMBER	DESCRIPTION	VENDOR
1				



©COPYRIGHT CD GUARDIAN LLC
THE INFORMATION IN THIS DRAWING IS CONFIDENTIAL
AND IS THE INTELLECTUAL PROPERTY OF CD
GUARDIAN LLC. REPRODUCTION IN WHOLE OR IN
PART WITHOUT WRITTEN PERMISSION OF CD
GUARDIAN LLC IS PROHIBITED.

DO NOT SCALE DRAWING TOLERANCES UNLESS OTHERWISE SPECIFIED		
METRIC	IMPERIAL	ANGLES
X ± .10mm	X ± .005"	± 1°
X ± .3mm	XX ± .01"	
XX ± .3mm	XXX ± .005"	

DESIGNED
A. HASSAN

APPROVED
A. VIJ 10/13/2018

DRAWING NAME
IFDR 65X,85X INSTALLATION DRAWING

SCALE
N/A

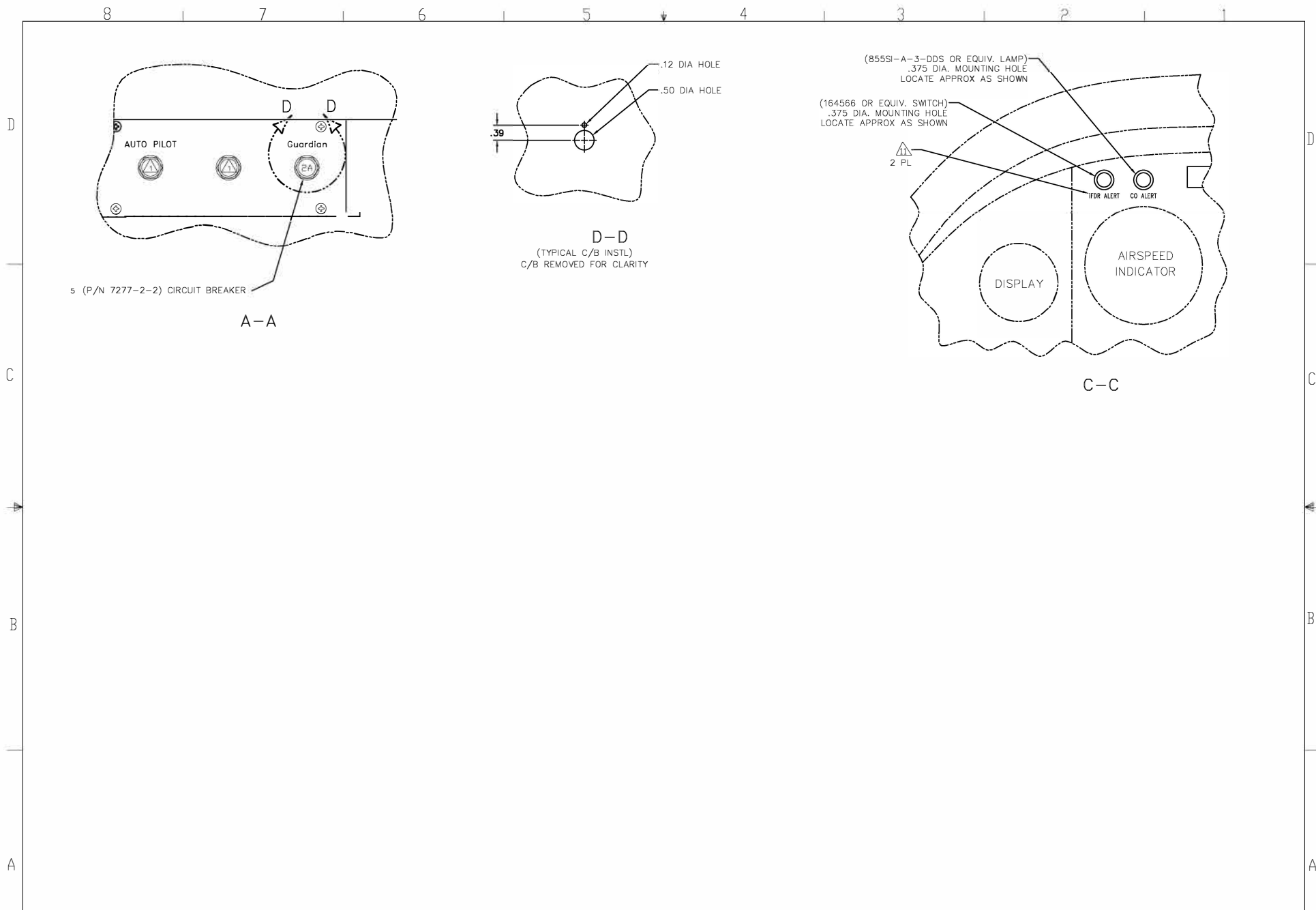
DWG #
10-2-IFDR65X_85X_INSTL.DWG

REVISION
A

NEXT ASSY

SHEET
1 of 9

8 7 6 5 4 3 2 1



1951 EAST AIRPORT DR.
TUCSON, AZ 85756-6902

©COPYRIGHT CO GUARDIAN LLC
THE INFORMATION IN THIS DRAWING IS CONFIDENTIAL
AND IS THE INTELLECTUAL PROPERTY OF CO
GUARDIAN LLC. REPRODUCTION IN WHOLE OR IN
PART WITHOUT WRITTEN PERMISSION OF CO
GUARDIAN LLC IS PROHIBITED.

DO NOT SCALE DRAWING		
TOLERANCES UNLESS OTHERWISE SPECIFIED:		
METRIC	IMPERIAL	ANGLES
X ± 1.00mm	X ± .05"	
.X ± .3mm	.XX ± .01"	± 1°
.XX ± .1mm	.XXX ± .005"	

DESIGNED:
A. HASSAN

APPROVED:
A. VIJ 10/13/2018

DRAWING NAME:
IFDR 65X,85X INSTALLATION DRAWING

SCALE:
N/A

DWG #
10-2-IFDR65X_85X_INSTL.DWG

REVISION
A

NEXT ASSY

SHEET
2 of 9

8

7

6

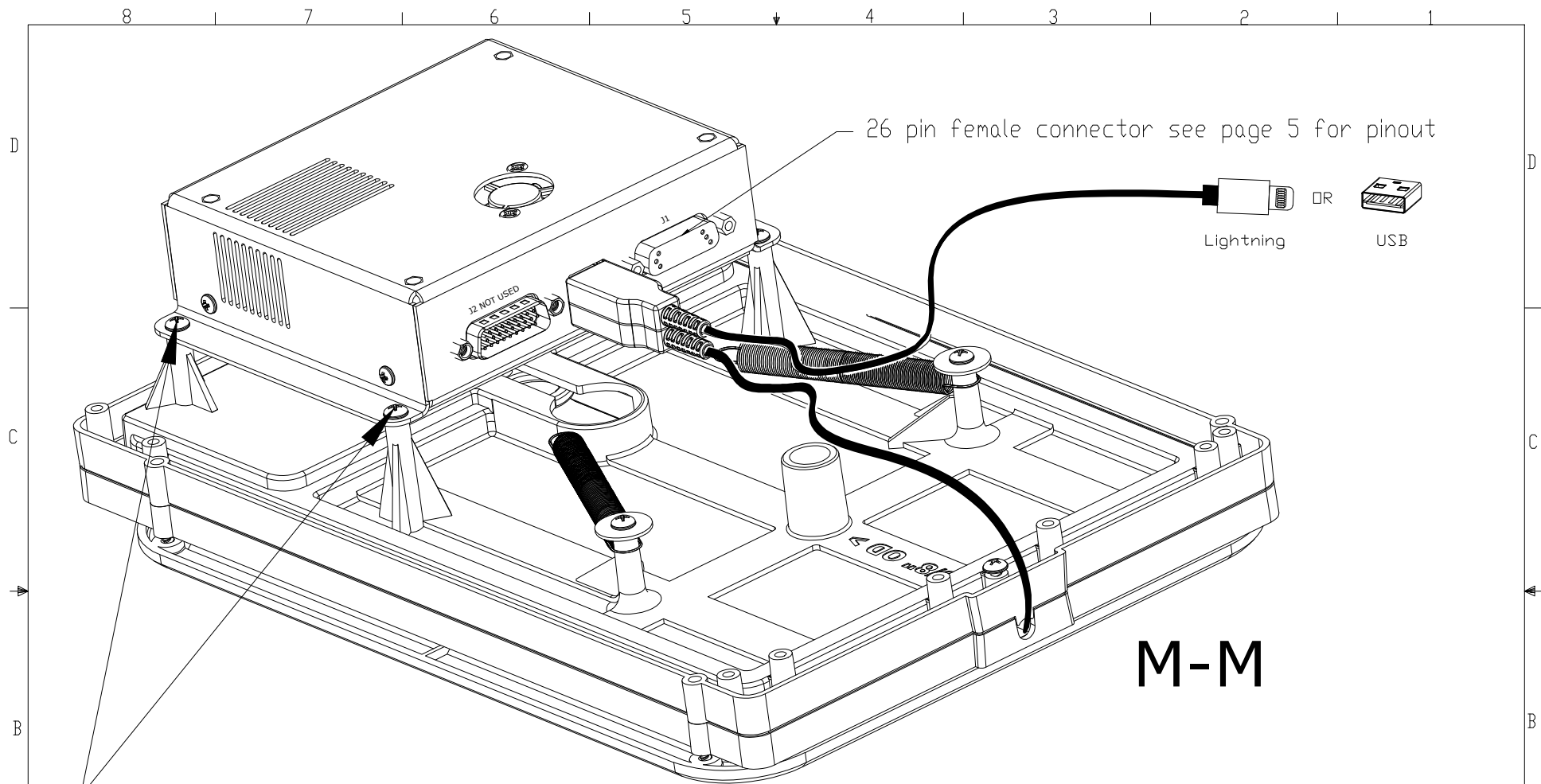
5

4

3

2

1



Note: (4) Lock washer must be installed with mounting screws

iFDR 85X MOUNT LOCATIONS



1951 EAST AIRPORT DR.
TUCSON, AZ 85756-6902

©COPYRIGHT CO GUARDIAN LLC
THE INFORMATION IN THIS DRAWING IS CONFIDENTIAL
AND IS THE INTELLECTUAL PROPERTY OF CO
GUARDIAN LLC. REPRODUCTION IN WHOLE OR IN
PART WITHOUT WRITTEN PERMISSION OF CO
GUARDIAN LLC IS PROHIBITED.

DO NOT SCALE DRAWING
TOLERANCES UNLESS
OTHERWISE SPECIFIED:
METRIC IMPERIAL ANGLES
X ± 1.00mm .X ± .05" ± 1°
.X ± .3mm .XX ± .01" ± 1°
.XX ± .1mm .XXX ± .005" ± 1°

DESIGNED:
A. HASSAN

APPROVED:
A. VIJ 10/13/2018

DRAWING NAME:
iFDR 65X,85X INSTALLATION DRAWING

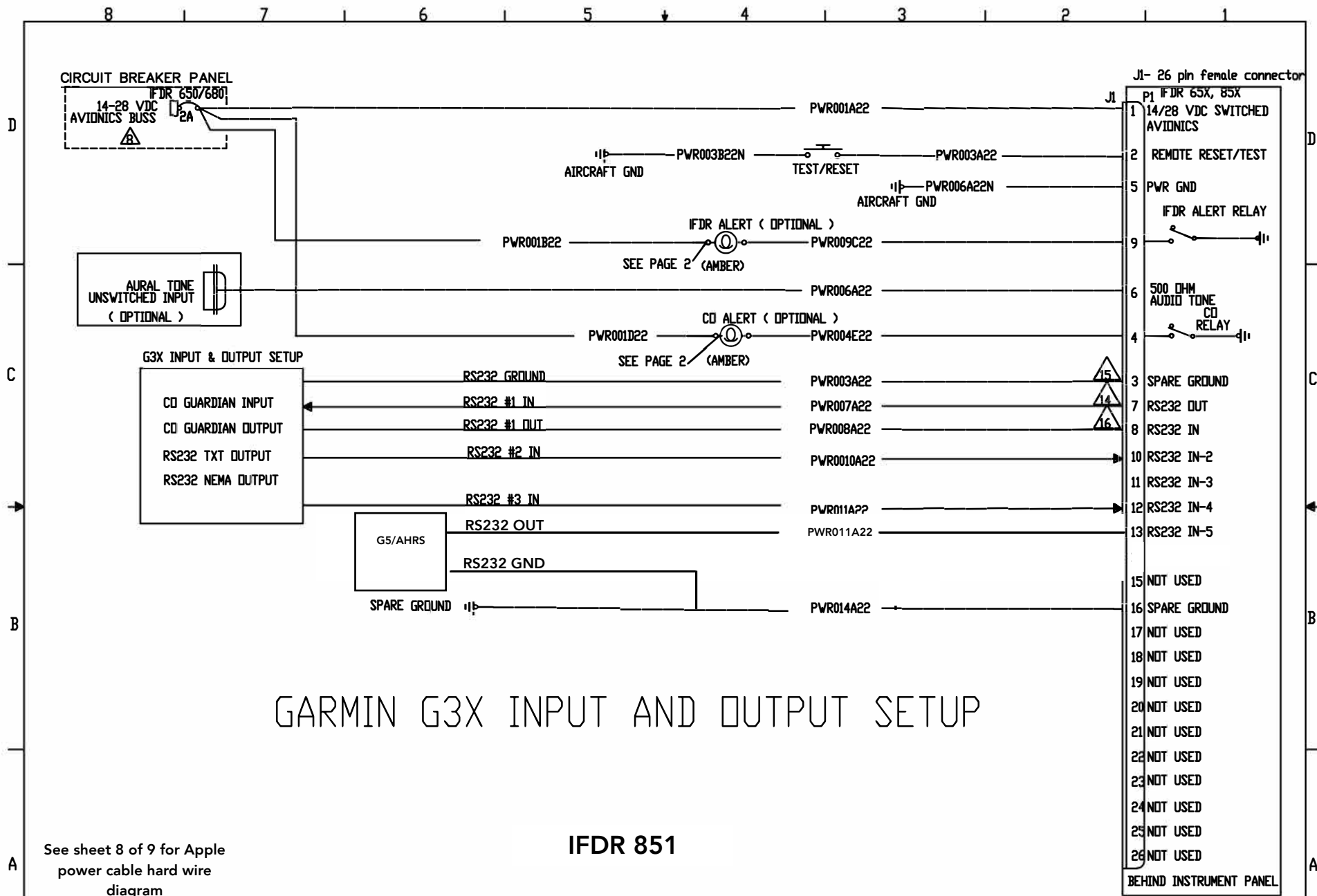
SCALE:
N/A

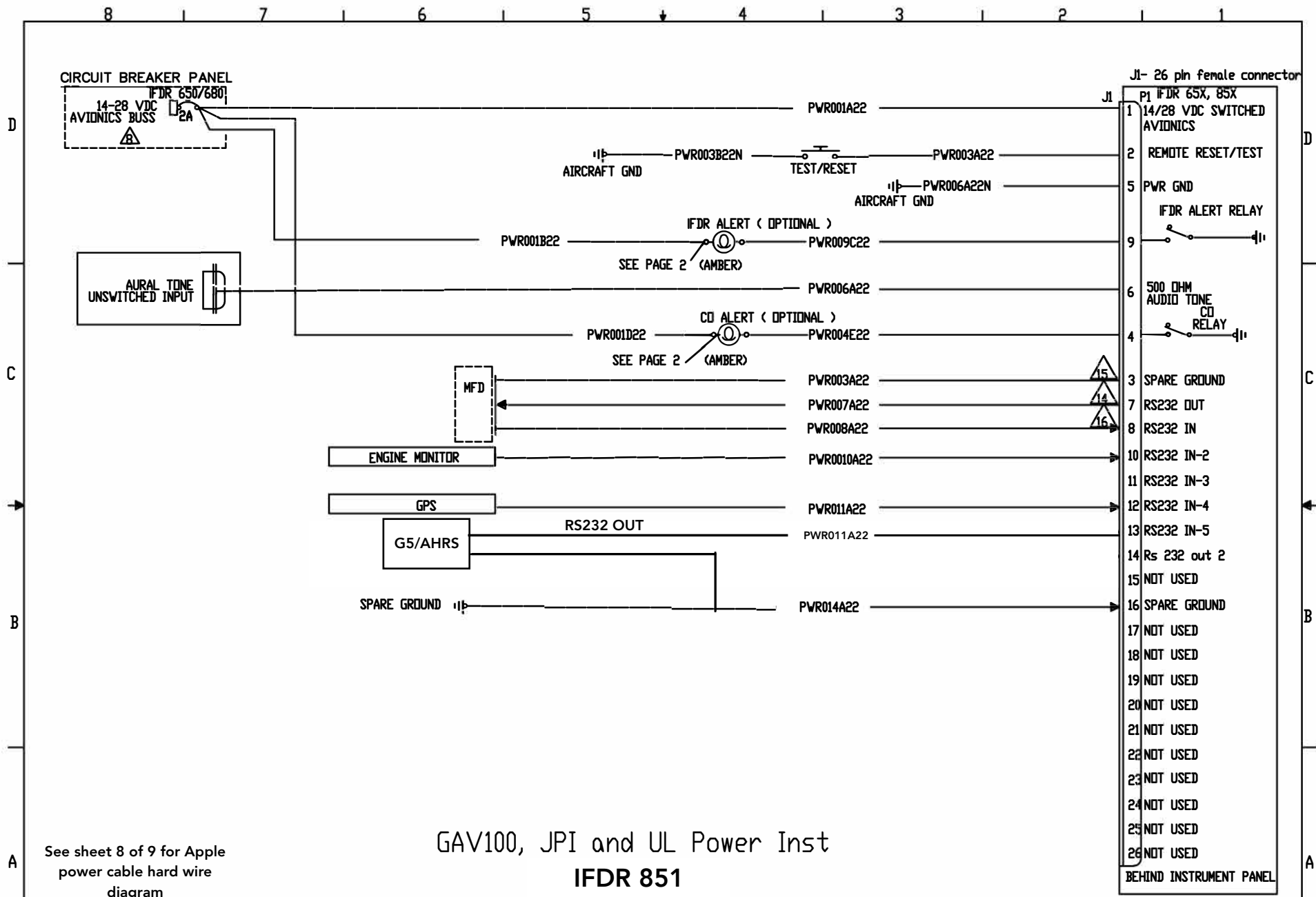
DWG #
10-2-iFDR65X_85X_INSTL.DWG

REVISION
A

NEXT ASSY

SHEET:
3 of 9





1951 EAST AIRPORT DR
TUCSON, AZ 85756-6912

©COPYRIGHT © GUARDIAN LLC
THE INFORMATION IN THIS DRAWING IS CONFIDENTIAL
AND IS THE INTELLECTUAL PROPERTY OF GUARDIAN LLC. REPRODUCTION IN WHOLE OR IN PART WITHOUT WRITTEN PERMISSION OF GUARDIAN LLC IS PROHIBITED.

DO NOT SCALE DRAWING
TOLERANCES UNLESS OTHERWISE SPECIFIED:
METRIC IMPERIAL ANGLES
X ± 1.00mm .X ± .05°
.X ± .3mm .XX ± .01° ± 1°
XX ± .1mm XXX ± .005°

DESIGNED
A. HASSAN

APPROVED
A. VIJ 10/13/2018

DRAWING NAME
IFDR 65X,85X INSTALLATION DRAWING

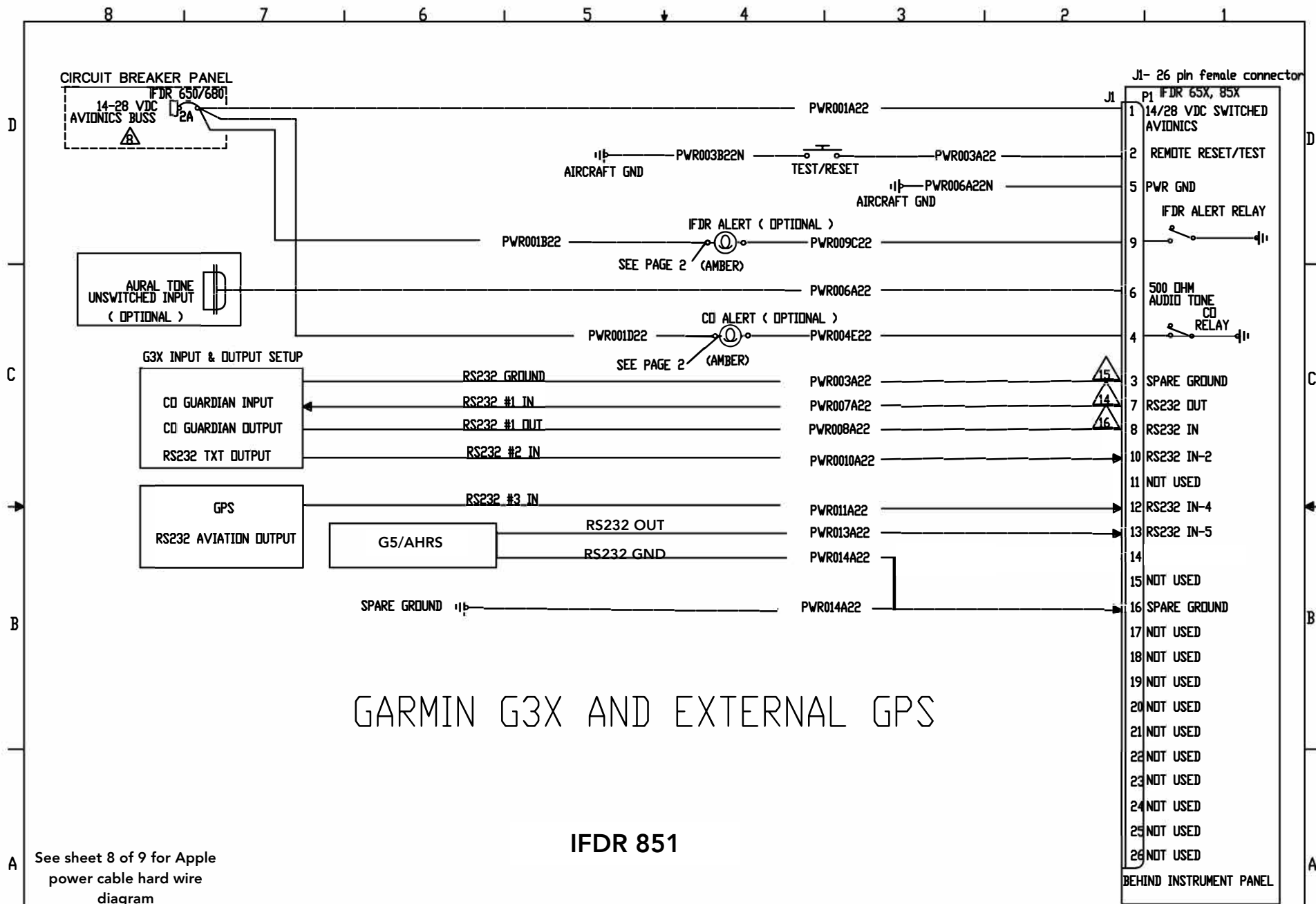
SCALE
11/A

DWG #
10-2-IFDR65X_85X_INSTL.DWG

REVISION
A

NEXT ASSY

SHEET
5 of 9



See sheet 8 of 9 for Apple power cable hard wire diagram



1951 EAST AIRPORT DR
TUCSON, AZ 85756-6912

©COPYRIGHT CD GUARDIAN LLC
THE INFORMATION IN THIS DRAWING IS CONFIDENTIAL
AND IS THE INTELLECTUAL PROPERTY OF CD
GUARDIAN LLC. REPRODUCTION IN WHOLE OR IN
PART WITHOUT WRITTEN PERMISSION OF CD
GUARDIAN LLC IS PROHIBITED.

DO NOT SCALE DRAWING
TOLERANCES UNLESS
OTHERWISE SPECIFIED:
METRIC IMPERIAL ANGLES
X ± 1.00mm .X ± .05°
.X ± .3mm .XX ± .01° ± 1°
XX ± .1mm XXX ± .005°

DESIGNED
A. HASSAN

APPROVED
A. VIJ 10/13/2018

DRAWING NAME
IFDR 65X.85X INSTALLATION DRAWING

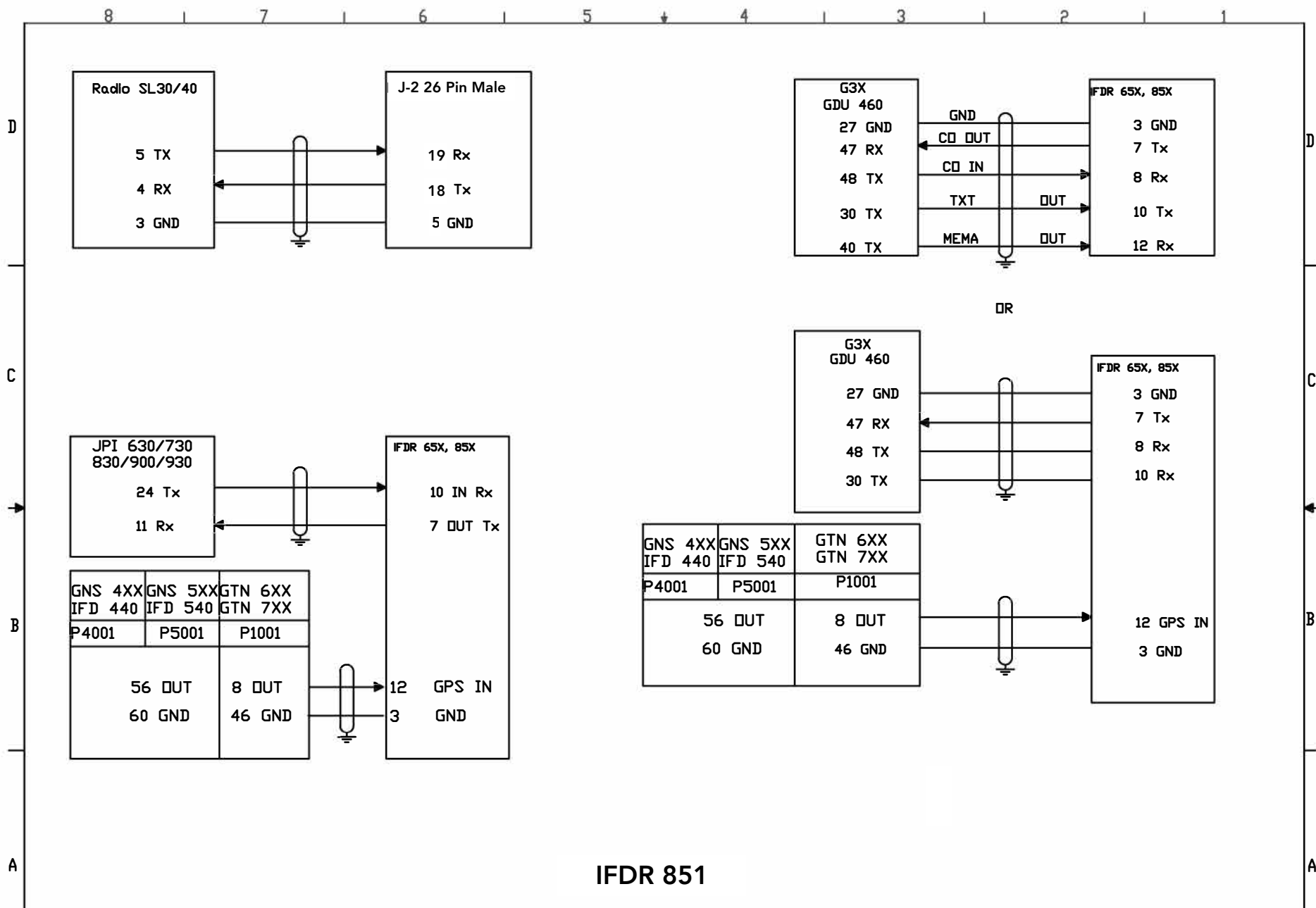
SCALE:
11/A

DWG #
10-2-IFDR65X_85X_INSTL.DWG

REVISION
A

NEXT ASSY

SHEET
6 of 9



951 EAST AVIATION BLVD
TUCSON, AZ 85775-5112

©COPYRIGHT © GUARDIAN LLC
THE INFORMATION IN THIS DRAWING IS CONFIDENTIAL
AND IS THE INTELLECTUAL PROPERTY OF CO
GUARDIAN LLC. REPRODUCTION IN WHOLE OR IN
PART WITHOUT WRITTEN PERMISSION OF CO
GUARDIAN LLC IS PROHIBITED.

DO NOT SCALE DRAWING
TOLERANCES UNLESS
OTHERWISE SPECIFIED:

METRIC	IMPERIAL	ANGLES
X ± 1.00mm	.X ± .05"	± 1°
.X ± .3mm	.XX ± .01"	
.XX ± .1mm	.XXX ± .005"	

DESIGNED
A. HASSAN

APPROVED
A. VIJ 10/13/2018

DRAWING NAME
IFDR 65X, 85X INSTALLATION DRAWING

SCALE
11/A

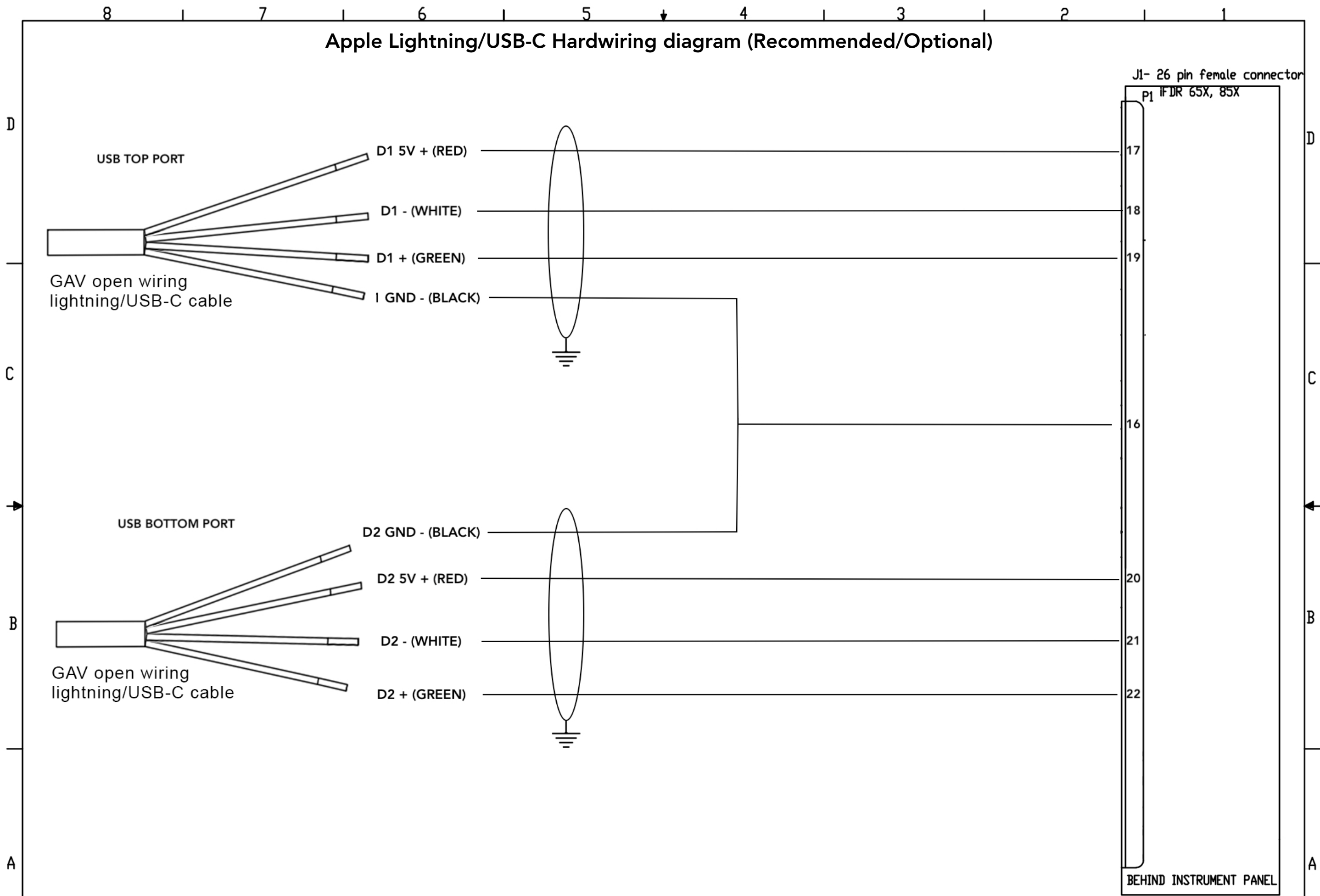
DWG #
10-2-IFDR65X_85X_INSTL.DWG

REVISION
A

NEXT ASSY

SHEET
7 of 9

Apple Lightning/USB-C Hardwiring diagram (Recommended/Optional)



1951 EAST AIRPORT DR.
TUCSON, AZ 85756-6902

©COPYRIGHT © GUARDIAN LLC
THE INFORMATION IN THIS DRAWING IS CONFIDENTIAL
AND IS THE INTELLECTUAL PROPERTY OF © GUARDIAN LLC. REPRODUCTION IN WHOLE OR IN
PART WITHOUT WRITTEN PERMISSION OF © GUARDIAN LLC IS PROHIBITED.

DO NOT SCALE DRAWING		
TOLERANCES UNLESS OTHERWISE SPECIFIED :		
METRIC	IMPERIAL	ANGLES
X ± 1.00mm	.X ± .05"	± 1°
.X ± .3mm	.XX ± .01"	
.XX ± .1mm	.XXX ± .005"	

DESIGNED
A. HASSAN

APPROVED
A. VIJ 10/13/2018

DRAWING NAME:
FDR 65X,85X INSTALLATION DRAWING

SCALE:
N/A

DWG #
10-2-IFDR65X_85X_INSL.DWG

REVISION
A

NEXT ASSY

Sheet
8 of 9

RADIO

SL30/40 Protocol Radio

RS232 IN

RS232 OUT

RS232 GND

J-2 26 Pin Male Connector

IFDR 851

18 RS232 OUT [TX]

19 RS232 IN [RX]

5 RS232 GND



1951 EAST AIRPORT DR.
TUCSON, AZ 85756-6902

©COPYRIGHT CO GUARDIAN LLC
THE INFORMATION IN THIS DRAWING IS CONFIDENTIAL
AND IS THE INTELLECTUAL PROPERTY OF CO
GUARDIAN LLC. REPRODUCTION IN WHOLE OR IN
PART WITHOUT WRITTEN PERMISSION OF CO
GUARDIAN LLC IS PROHIBITED.

DO NOT SCALE DRAWING
TOLERANCES UNLESS
OTHERWISE SPECIFIED:
METRIC IMPERIAL ANGLES
X ± 1.00mm .XX ± .05' ± 1°
.X ± .3mm .XX ± .01'
.XX ± .1mm .XXX ± .005'

DESIGNED
A. HASSAN

SCALE:
N/A

DWG #
10-2-IFDR65X_85X_INSTL.DWG

APPROVED
A. VIJ 10/13/2018

DRAWING NAME:
FDR 65X,85X INSTALLATION DRAWING

REVISION
A

NEXT ASSY

SHEET:
9 of 9